

Main Gallery
2751 Todd Street
Alameda, California, 94501
Annex Gallery
1951 Monarch Street
Alameda, California, 94501
Phone 1-800-380-9822 or 510-740-0220
Fax 510-749-7517
www.michaans.com
info@michaans.com

MICHAAN'S AUCTIONS

Auctioneers & Appraisers

Michaan's Auctions
PO Box 489
Alameda, CA 94501
Bonded Pursuant to California Civil Code sec. 1812.600 et seq.
Bond # 70044066

PRSR FIRST CLASS
U.S. POSTAGE PAID
SAN JOSE, CA
PERMIT NO. 666

RETURN SERVICE REQUESTED



Upcoming Auctions and Events 2010

Free Appraisal Events
Every Wednesday
Main Gallery

10am-1pm
Limit 5 items per person

Estate Auction
Sunday, March 7, 12 noon
Main Gallery

Preview
Friday, March 5, 10am - 5pm
Saturday, March 6, 10am - 5pm
Sunday, March 7, 9am until end of sale

Annex Auction
Tuesday, March 9, 10am
Wednesday, March 10, 10am
Annex Gallery (Building 25)

Preview
Sunday, March 7, 9am - 5pm
Monday, March 8, 9am - 5pm
Tuesday, March 9, 9am until end of sale
Wednesday, March 10, 9am until end of sale

Spring Auction
Saturday, April 3, 12 noon
Main Gallery

Preview
Friday, April 2, 10am - 5pm
Saturday, April 3, 9am until end of sale

Estate Auction
Sunday, April 4, 12 noon
Main Gallery

Preview
Friday, April 2, 10am - 5pm
Saturday, April 3, 10am - 5pm
Sunday, April 4, 9am until end of sale

Annex Auction
Tuesday, April 6, 10am
Wednesday, April 7, 10am
Annex Gallery (Building 25)

Preview
Sunday, April 4, 9am - 5pm
Monday, April 5, 9am - 5pm
Tuesday, April 6, 9am until end of sale
Wednesday, April 7, 9am until end of sale

Estate Auction
Sunday, May 2, 12 noon
Main Gallery

Preview
Friday, April 30, 10am - 5pm
Saturday, May 1, 10am - 5pm
Sunday, May 2, 9am until end of sale

Annex Auction
Tuesday, May 4, 10am
Wednesday, May 5, 10am
Annex Gallery (Building 25)

Preview
Sunday, May 2, 9am - 5pm
Monday, May 3, 9am - 5pm
Tuesday, May 4, 9am until end of sale
Wednesday, May 5, 9am until end of sale

Follow us on Facebook, Twitter and YouTube.

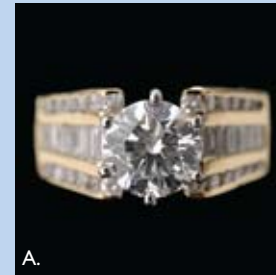


Free Guided Gallery Tour Saturday, March 6, 2010, 10:30am

Jewelry coordinator Rhonda Harness will conduct this month's guided tour of select auction highlights. She will focus on Michaan's collection of fine jewelry and wristwatches.

Rhonda will review historic styles and fashions in jewelry and explain how fashion and politics are reflected in jewelry through the decades. She will also give pointers on looking for jewelry and gemstone quality and construction. Feel free to examine pieces with a jeweler's loupe or try them on for fun!

To reserve a spot call 510-740-0220 x116 or email rsvp@michaans.com



We are currently seeking consignments for our Spring Auctions.

For more information call 1 800-380-9822 or 510-740-0220. Visit our website at www.michaans.com to learn more.

Please inquire about our risk free consignment policy.



- A. Diamond, 14K Yellow Gold Ring, Sold for \$10,530
- B. Colin Campbell Cooper (California 1856-1937)
"Sunlit flowers along pathway," Sold for \$17,550
- C. Chinese Celadon Glazed Garlic Head Vase, Qing Dynasty,
Sold for \$70,200
- D. Spanish Parcel Gilt Iron Mounted Bone Inlaid Walnut
Vargueno, 17th Century, Sold for \$40,950



Estate Auction
Sunday
March 7, 2010
Preview
March 5-7

Please
Join Us!

Inquiries

Fine Art

Bekka Sakks - bekka@michaans.com
510-740-0220 ext 119

Furniture & Decorative Arts

Elizabeth Dalton - boo@michaans.com
510-740-0220 ext 127

Asian Works of Art

Sarah Zhu - sarahzhu@michaans.com
510-740-0220 ext 102

Jewelry

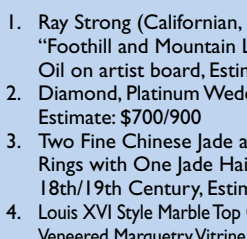
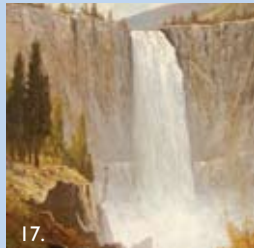
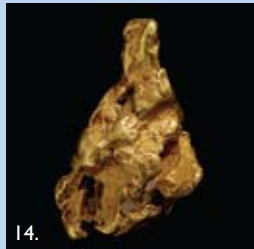
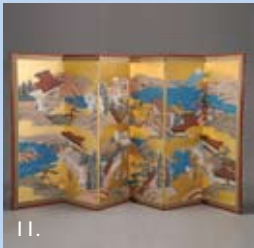
Rhonda Harness - jewelry@michaans.com
510-740-0220 ext 125

Stamps and Coins

Michael Rosenberg - stampdept@michaans.com
510-740-0220

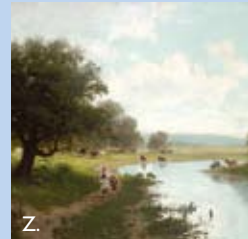
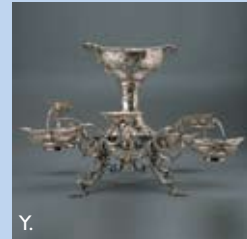
We are currently accepting property for upcoming auctions,
please inquire about our risk free consignment policy.

www.michaans.com



1. Ray Strong (Californian, 1905 - 2006) "Foothill and Mountain Landscape," Oil on artist board, Estimate: \$4,000/6,000
2. Diamond, Platinum Wedding Ring Set, Estimate: \$700/900
3. Two Fine Chinese Jade and Crystal Thumb Rings with One Jade Hairpin, 18th/19th Century, Estimate: \$1,200/1,800
4. Louis XVI Style Marble Top Gilt Bronze Kingwood Veneered Marquetry Vitrine, Estimate: \$1,000/1,500
5. Arts & Crafts Gilt Brass and Slag Glass Floor Lamp, Estimate: \$800/1,000
6. Chinese Seated Wood Guan Yin with Inlaid Ivory Face, Qing Dynasty, Estimate: \$1,200/1,800
7. Berlin Porcelain Plaque of Classical Maidens, Estimate: \$1,500/2,000
8. Art Deco Burl Walnut Credenza with Marble Top, Estimate: \$3,000/4,000
9. Sam Messer, (Massachusetts b. 1955) Framed enamel on chrome, Estimate: \$600/800
10. Edward Borein (California 1872-1945) "Robes and Meat," framed etching, Estimate: \$1,000/2,000
11. Large Japanese Six Panel Floor Screen, 20th Century, Estimate: \$800/1,200
12. Edwardian Diamond, Platinum Ring, Estimate: \$1,800/2,000
13. R. Lalique Ferrieres White Opalescent Glass Vase, Marcihac #1019, Estimate: \$1,000/1,500
14. Natural Gold Nugget, Estimate: \$900/1,000
15. Weyms Ware Pig Form Bank, Estimate: \$800/1,200
16. Wallace Sterling Flatware Service, Estimate: \$800/1,200
17. Tom Hall (California 20th Century) "Nevada Fall, Yosemite," framed oil on canvas, Estimate: \$600/800

18. Sapphire, Diamond, 18K White Gold Necklace, Estimate: \$3,000/4,000
19. Benigno Yamero Ruiz (California 1880-1929), Barbizon style landscape, framed oil on canvas, Estimate: \$1,000/2,000
20. Mexican Pesos Gold Coin, 1821-1947 Pendant, Estimate: \$700/800
21. Two Art Nouveau Silverplate Compotes, Estimate: \$800/1,200
22. Unusual Chinese Carved Ivory Snuff Bottle, 18th/19th Century, Estimate: \$1,500/2,500
23. Attributed to Qiu Ying (Ming Dynasty) "Serenade in the Moonlight," Estimate: \$2,000/3,000
24. Victorian Renaissance Revival Walnut Desk and a Wicker Arm Chair, Estimate: \$2,000/3,000
25. Early 20th Century Dutch, oil on board, "Winter Landscape with Figures," Estimate: \$1,000/1,500
26. Chinese Amber Colored Peking Glass and Gilt Lotus Form Wash Pot, 19th Century, Estimate: \$400/600
27. Tourmaline, Enamel, 14K Yellow Gold Necklace, Estimate: \$1,200/1,500
28. French Animalier Bronze Group of a Mother Goat, Pierre Jules Mene (French 1810-1877), Estimate: \$1,000/1,500



Spring Auction
April 3, 2010
Preview
April 2-3

- X. Royal Copenhagen Flora Danica Porcelain Dinner Service (75 pieces), Estimate: \$50,000/70,000
- Y. English Sterling Epergne, Edinburgh, Circa 1792, maker's mark "WVR," Estimate: \$15,000/20,000
- Z. Frederick Ferdinand Schafer (California 1839 - 1927) "Pastoral Scene on Russian River" Estimate: \$3,000/5,000

This auction will feature some of the finest lots of silver, porcelain, furniture, paintings and jewelry ever assembled. Highlighting the sale is one of the largest sets of hand-painted Flora Danica porcelain ever to be offered at auction. The 75 piece service for twelve with serving pieces has a pre-sale estimate of \$50,000 / 70,000 against an estimated retail value of close to a quarter million dollars.



We are excited to be offering the Estate of a World Class Bead Collector including a collection of European trade beads, African tribal beads, Venetian glass, King bead necklaces, Amber, Chevron necklaces, Coral, Carnelian and much more. Various lots will be offered throughout March and April Auctions. For more information please call our Jewelry coordinator at ext 125.